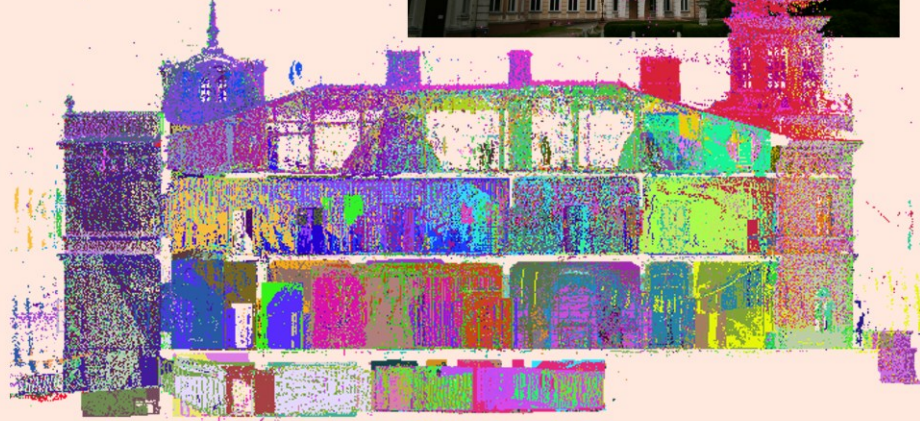


Project 2008: Palace, XIX , Poland

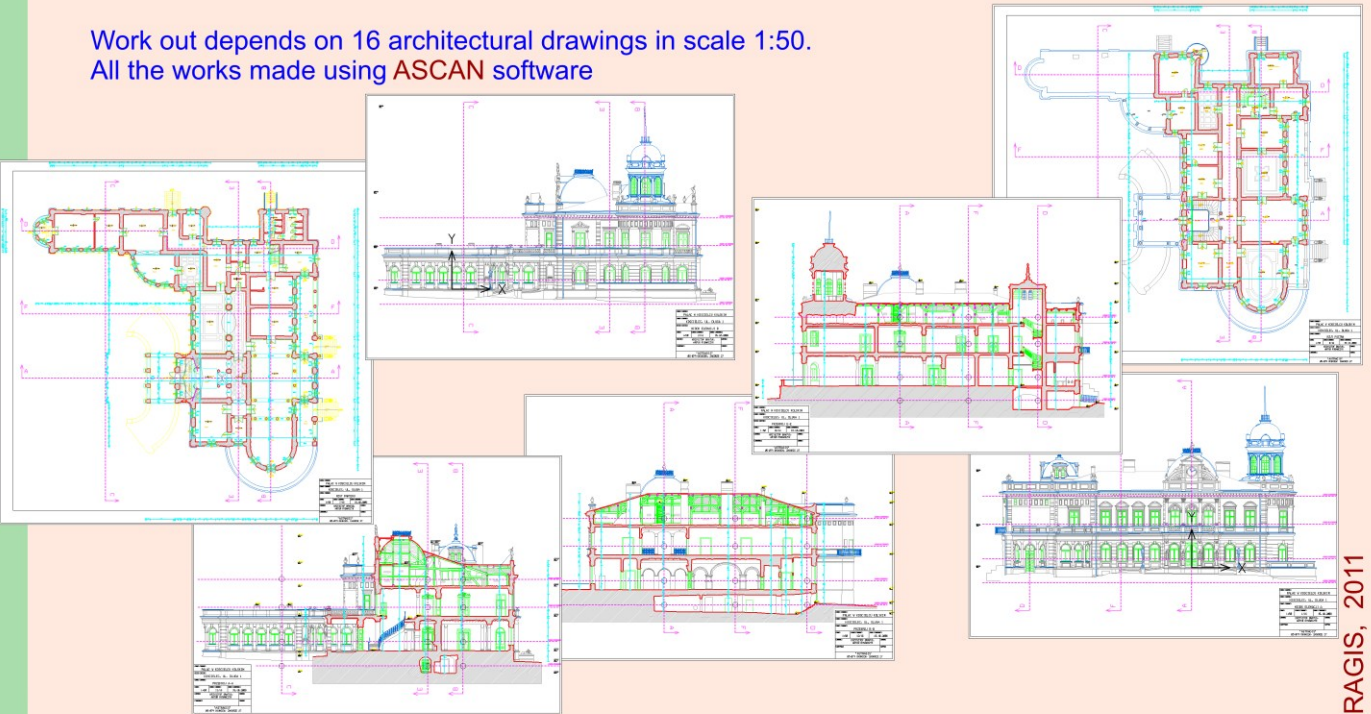
Palace from second half of XIX century.
Gross building area: 2500m²,
Cubature: 9000m³.



250 Scans made during the field works.



Work out depends on 16 architectural drawings in scale 1:50.
All the works made using ASCAN software



Roof framing made as 3D model.
Bars measured with accuracy <math><1\text{cm}</math>.

